



'Stop the Presents! The Murder at Mary A. Felo's Bridal Shower!' (8-12 Guests Electronic Version.)

Created by *mymysteryparty.com* Copyright © 2007 *mymysteryparty.com*

All rights reserved. Worldwide copyright laws and conventions protect all *mymysteryparty.com* printed materials. This document may not be reproduced or transmitted in any form or by any means, electronic or mechanical, including photocopying, recording, scanning or by any information storage and retrieval system without express written consent from *mymysteryparty.com*. The buyer has purchased this as a single use game and is hereby entitled to use these materials for one event only in a private setting. The buyer shall

purchase Multi-Use licenses from *mymysteryparty.com* in the event this game is to be utilized for multiple events in any setting (commercial venue, private home, etc.).

DISCLAIMER: Because we have no control over the application and production of this game, *mymysteryparty.com* cannot guarantee results and will not be responsible for any personal injury, death and/or loss to participants. No use of this production other than the stated entertainment use is implied or intended. Such use is the sole responsibility of the user. The subject matter contained here is fiction and is intended purely for entertainment. The names and actions carried out by the characters are not intended to represent or imply the behavior of any person, living or dead. Any likenesses to real persons or events are purely coincidental.

TABLE OF CONTENTS

| | |
|--|--------------|
| LIST OF CHARACTERS FOR THE HOST | 2 |
| GENERAL INSTRUCTIONS FOR THE HOST | 4 |
| TIME LINE | 9 |
| HOW TO PLAY A MURDER MYSTERY – GUESTS INSTRUCTIONS | 10 |
| OPTIONAL PRE-GAME ROUND | 11 |
| ROUND ONE | 15 |
| ROUND TWO (DO NOT VIEW IF YOU WISH TO KEEP THE VICTIM A SURPRISE) | 19 |
| VICTIM SIGN | 23 |
| FORENSIC ANALYSIS REPORT | 24 |
| MURDER MYSTERY INVESTIGATION SHEETS | 25 |
| ROUND THREE(DO NOT VIEW IF YOU WISH TO KEEP THE MURDERER A SURPRISE) | 37 |
| NAME TAGS | 40 |
| MENU SUGGESTIONS | 42 |
| BONUS ACTIVITIES | 45 |
| ANSWER KEY – USE IF NEEDED TO ANSWER ANY END OF THE MYSTERY QUESTIONS | 55-56 |

SYNOPSIS

(THIS OUTLINES THE FLOW OF THE PARTY EVENTS).

Ima Gudfrend hosted a bridal shower at her home in Mystical Falls for Mary A. Felo. Mary Felo was soon to be married to her true love, Harry Iznace. As the colorful cast of characters arrived at the bridal shower, they enjoyed cocktails & appetizers as they engaged in fun party games. The guests soon found they didn't all get along that well, but Ima Gudfrend pressed on with more fun bridal shower challenges. The guests had a blast – even among accusations, insults, and downright cattiness that ensued around them.

Being an excellent hostess, Ima served a scrumptious dinner which seemed to calm everyone's nerves until...a murder victim was discovered! The guests rallied together in hopes of solving this mystery and underwent a thorough investigation including an analysis of a forensic investigation report. The guests turned in their guesses of whodunit and then lightened up the mood with another exciting party game.

The guests soon sat in a circle and one-by-one, told their story of involvement, if any, with the murder. Everyone was shocked when the murderer confessed! While the group waited for the police to arrive, they played another hilarious shower game. This night became the bridal shower that nobody would ever forget!

LIST OF CHARACTERS FOR THE HOST

| CHARACTER | BRIEF DESCRIPTION | SUGGESTED ATTIRE |
|---|--|--|
| <p>IMA GUDFREND <i>Matron/Maid of Honor & Pastry Chef</i></p> <p>REQUIRED Female</p> | <p>Ima Gudfrend is the best friend of the Bride – Mary Felo. ‘Silly’ is this pastry chef’s middle name! Known to be a tad boy crazy, this comedienne wild child might be the last of this group to settle down!</p> | <p>Chef’s outfit and spatula as a prop.</p> |
| <p>MARY A. FELO <i>Bride to be & Talk Show Host</i></p> <p>REQUIRED Female</p> | <p>Mary Felo is the quintessential romantic! She is finally marrying her high school sweetheart – Harry Iznace, the local proctologist. Mary has a sugary sweet personality and she prefers singing over talking anytime!</p> | <p>Casual attire with a bridal shower veil, tiara, or hat.</p> |
| <p>KARA TINN <i>Bridesmaid & Hairstylist</i></p> <p>REQUIRED Female</p> | <p>If you can stand to sit through thirty minutes of obnoxious behavior, you should get your tresses styled by Kara Tinn –she’s the best in town! Kara spouts out spontaneous rhymes about situations around her and she has been known to be a compulsive liar! Nonetheless, she’s got an uncanny talent with scissors and a comb!</p> | <p>Outrageous and trendy outfit – very wild hairstyle.</p> |
| <p>IONE FELO <i>Mother of the Bride & Pageant Director</i></p> <p>REQUIRED Female</p> | <p>The doting mother of the bride and successful beauty pageant director, Ione Felo, is one lady whose face is plastered in the dictionary by the definition of cheerful! Ione’s constant loving concern for her daughter Mary can grow annoying to those around her; however, her constant roaring laughter can be contagious!</p> | <p>Semi-formal dress with up-do hairstyle.</p> |
| <p>TRIANNE THINGROS <i>Bridesmaid & Reality T.V. Star</i></p> <p>REQUIRED Female</p> | <p>Apathy and ultra-competitiveness sum up this reality television star! The ill-mannered behavior of Trianne Thingros can be shocking at times, but it’s well-suited for reality television shows! There isn’t much that Trianne hasn’t done on television but if there is a challenge ahead of her, she’s the first to dive in and try it!</p> | <p>Very casual attire with a bag of plastic insects as a prop.</p> |
| <p>TARILYN TONROW <i>Bridesmaid & Film Star</i></p> <p>REQUIRED Female</p> | <p>Watch out for Tarilyn Tonrow! There are not too many starlets in Hollywood as narcissistic and insensitive as her! It’s surprising that she has <i>any</i> friends left over the years as her rude behavior drives everyone away...unless they’re on her payroll that is.</p> | <p>Glamorous attire and sunglasses.</p> |
| <p>PURPLE <i>Bridesmaid & Pop Star</i></p> <p>REQUIRED Female</p> | <p>Her newest hit single, ‘I’ll kill you if you speak again’, says all you need to know about Purple! She’s in the midst of a 12-step program learning to control her severe anger management problem. So, be careful what you say around this moody & aggressive pop diva!</p> | <p>Pop star outfit with a crazy wig or colored spray for the hair.</p> |

| | | |
|--|---|--|
| <p>JUWANA B. ONTIVEE <i>Friend of the Bride & Film Producer</i></p> <p>REQUIRED Female</p> | <p>'Do it once and check it five times' is Juwana's motto! This obsessive film producer is the one to be around at a party as she gets the dance floor moving with her hyperactive dance moves!</p> | <p>Casual attire with clapboard as a prop (this can be made out of cardboard).</p> |
| <p>MRS. ENERBE IZNACE <i>Mother of the Groom & Housewife</i></p> <p>Optional Female</p> | <p>Enerbe is the living cliché of a 'mother-in-law'! She's the typical meddling housewife with nothing better to do than live her life vicariously through her son. Mary Felo doesn't realize that she has a life ahead of her filled with failed attempts to live up to the impossible standards of the 'perfect wife and mother model' that she's created for her beloved son.</p> <p>*It is encouraged to cast this player before all other optional players, as she is still integrated into the story line. However, it is not required to play this role in your game.</p> | <p>Prim and proper dress with apron and rubber dish-washing gloves as a prop.</p> |
| <p>OLIVE FORMATHE <i>Cousin of the Bride & Mathematician</i></p> <p>Optional Female</p> | <p>The frugal and over-inquisitive Olive Formathe is a nationally renowned mathematician and cousin of the bride. This math genius will keep you entertained with her over-the-top sense of humor and snort-filled laughter.</p> | <p>Nerdy outfit with glasses taped in the middle.</p> |
| <p>ROSE SPRAYAH <i>Friend of the Bride & Fragrance Model</i></p> <p>Optional Female</p> | <p>Rose Sprayah is ready and willing to shove a fragrance soaked card in your hand at the local department store! But watch out – because whatever you have ever done, said, or climbed- Rose has done more, said it louder and climbed higher!</p> | <p>Elegant dress and hair with a perfume bottle as a prop.</p> |
| <p>DR. TESSIE TUBER <i>Aunt of the Bride & Scientist</i></p> <p>Optional Female</p> | <p>Dr. Tuber is your typical intellectual college professor and the loving aunt of the bride. However, make sure nothing goes wrong around her as she is the first one to point the finger and it might be at you! <i>Blame</i> is her game!</p> | <p>Lab jacket and test tube as a prop.</p> |

FULL INSTRUCTIONS IN THE PURCHASED GAME

GENERAL INSTRUCTIONS FOR THE HOST

Thank you for purchasing 'Stop the Presents! The Murder at Mary A. Felo's Bridal Shower' game from mymysteryparty.com! This mystery is a light-hearted and comical mystery that allows you and your guests to step into a different character while trying to solve the entertaining mystery. The party can be a huge success as long as you and your guests relax and let the mystery unravel during each round.

PREPARE YOUR KIT: This document needs to be printed in advance of the party. Cut out the clues, slip them into envelopes labeled with the appropriate round and character for each round of the party. It is optimal to choose different colored envelopes for each round and you can purchase the exact amount needed for your game on the <http://www.mymysteryparty.com/props> site in the **Mystery Prop Emporium** section at /props. For economy's sake, an alternative is to scroll the clues and fasten with a ribbon. Be sure to label the outside of each scroll with the character/round. In these instructions, however, we will assume you are using the envelope method for each character, each round.

GENERAL HOSTING: During the party, your job as the host player is to make sure the rounds flow properly. As the host, you may choose to play any character you wish – and we encourage our hosts to play the game! The game will unfold as the night goes along. As the game progresses, check on your guests to see if they are implementing the clues on their clue cards and encourage them to mingle with all of the other guests and to take their time and not rush anything. It's all about gossiping! As the host, give the clue card envelopes to the guests at the appropriate times and make sure that everyone is having a blast! You'll need to hide the victim items (i.e. victim sign, etc.) in the nearest restroom prior to the party. This is outlined in the host instructions. Make sure to read these host instructions for each round prior to the party to ensure that you have everything in place for the big day!

FULL INSTRUCTIONS IN THE PURCHASED GAME

UPGRADE YOUR DOWNLOAD TO A BOXED SET: For a complete surprise, you can elect to upgrade this download to the pre-printed 'party ready' party pack option from the mymysteryparty.com site in the Party Ready Pack section and we will send you the clues in envelopes and the rest of prepared game documents – 'ready to go' (this is an additional charge since we utilize our paper, ink, envelopes, labor, etc.). This upgrade removes the original price of the download and charges you the difference between the party ready pack and download versions. In other words, if a hypothetical download was \$50.00 and the Party Ready Pack was \$150.00, you'd pay the difference of \$100.00 for the boxed set. To determine the differences between this instant download and the prepared kit, check out our chart here: <http://ep.yimg.com/ty/cdn/yhst-43578580121885/instant.pdf>

OPTIONAL PLAYERS: This mystery comes with 12 characters. There are 8 required characters (#1 through #8) and 4 optional characters in this mystery (#9 - #12). If you do not have guests for these characters, simply omit the clue cards of these guests. If you need to have unique characters added beyond the available expansion packs, please purchase [custom characters from the My Mystery Party site under the Game Extras, Custom Characters section](#). Please allow us a maximum of up to 10 business days to complete your request (however, during the busy times of the year, this might be extended depending upon demand). Depending on the author queue, we might be able to do them quicker for you but if you are in a hurry - please check with us first before you purchase 😊.

Again: if you do not want to know the solution &/or who the murderer is, do not view the final round of clues or the final answer key at the end of this document.

OPTIONAL PROPS: We also offer mystery props on the **My Mystery Party** site in the [Prop Emporium](#) including a thunderstorm ambiance 10 minute sound way to play in the background, authentic crime scene barrier tape, crime scene balloons, mystery investigation pens, white face makeup for the victim, victim t-shirts, and even instrumental rap beats as a downloadable mp3 for the optional but highly suggested bonus game rap contest. There are evidence note cards, a victim's halo, a chalk outline mat (body silhouette), party balloons (good for bonus games and décor), spider webbing, and more. There is a 'Do You Think You Can You Dance' mp3 track for the *Do You Think You Can Dance* challenge as well.

The game is organized into four rounds and is structured as follows:

OPTIONAL PRE-GAME TASKS: these optional pre-game task sheets are to be delivered to each guest before the party or give them to the guests as they arrive. All pre-game materials are optional and do not alter the mystery and are intended to enhance the pre-game build up for the event. These tasks are not vital to solving the mystery and omission of them does not alter the mystery in any way.

APPETIZER (COCKTAILS & ADULTS) HOUR / ROUND ONE: Deliver these clues as your guests arrive.

DINNER HOUR / ROUND TWO: Deliver these clues while you serve dinner (optional) to your guests.

DESSERT, AND THE BIG REVEAL/ SOLUTION ROUND THREE: Deliver these clues with coffee/hot cocoa and dessert (again, it's optional to serve dessert)

Note: you do NOT have to serve dinner, this is only suggested and the instructions tell you 'when' to serve it and what to do around the time you serve it. You also do not have to serve dessert – again, it is only a suggestion. You can simply skip both without a problem and just serve snacks/appetizers the entire time. However, please don't have a party without offering some type of food – even if it's just snacks.

For further questions, check out our FAQ web page at <http://mymysteryparty.com/how-to-host-faq/>

If your question is not listed in our FAQ, contact us at the email addresses below.

Mystery Questions: author@mymysteryparty.com

Web based Questions: support@mymysteryparty.com

FOR MORE INFORMATION ON HOW TO HOST, HERE ARE SOME HELPFUL VIDEOS AND ARTICLES FOR YOU TO VIEW (CLICK ON THE FOLLOWING LINKS)

If the links aren't working for you, go to our front page of www.MyMysteryParty.com and scroll to the middle of the page to view them:

- [How to Host a Murder Mystery Party Instructional Video](#)
- [How to Plan a Murder Mystery Party Instructional Video](#)
- [How to Host in Ten Easy Steps Article \(in our blog\)](#)
- [How to Host a Phenomenal Event Article \(in our blog\)](#)

OPTIONAL PRE-GAME ROUND

Before the party, encourage your guests to view the [Your Mystery Party -YourMysteryParty.com/bridal](http://YourMysteryParty.com/bridal) website and use the free printable My Mystery Party invitations as they have the character descriptions included. This

FULL INSTRUCTIONS IN THE PURCHASED GAME

SAMPLE

ROUND ONE

FULL INSTRUCTIONS IN THE PURCHASED GAME

SAMPLE

ROUND TWO

FULL INSTRUCTIONS IN THE PURCHASED GAME

SAMPLE

ROUND THREE

ACCUSATIONS: after you collect the mystery investigation sheets, allow the guests to one-by-one accuse who they believe the murderer is and how they did it. Instruct them also to tell the group their guess of the murderer's motive. If you are having an awards ceremony using the awards certificates available for purchase on the My Mystery Party site in the mystery props section, you can use this round as the final decision maker on the best actor/actress award.

FULL INSTRUCTIONS IN THE PURCHASED GAME

OPTIONAL AWARDS CEREMONY: after the murder confesses, host an optional awards ceremony. We offer up to twelve award certificates at the Prop Emporium on our site. But also, feel free to purchase ribbons, trophies, or other awards and have fun with it!

Example Timeline

7:00 PM: Guests arrive, have their pictures made and enjoy appetizers. Have the guest instructions, the Ethos Realm map, and a character list available for the guests to view.

7:10 PM: The host goes over the instructions for the mystery game. It is optional to have each character stand up and introduce themselves to the group.

7:20 PM: The Round One envelopes are handed out and the game begins. The guests mingle and discuss the clues on their clue cards. Motives will start to unfold during this round.

7:50 PM: An optional bonus game is played. (15 minutes)

8:05 PM: Dinner is served. (Dinner is optional – appetizers / snacks can be served throughout the party instead of serving a formal dinner.)

8:45 PM: The Round Two envelopes are handed out, and the guests mingle about with their pre-murder clues.

9:00 PM: The victim becomes the victim, and the investigation of the crime begins. The mystery investigation sheets are handed out and the guests reveal their post-murder clues and investigate the crime.

9:15 PM: The forensic report is revealed. The guests review it and finalize their best guess of whodunit.

9:20 PM: The investigation sheets (guesses of whodunit) are turned in to the host and the host allows the guests to one at a time accuse who they believe did it.

9:30 PM: Dessert and coffee (both optional) are served and the Round Three envelopes are handed out to the guests. The guests sit in a circle and one-by-one, the solutions are revealed by each suspect and the murderer confesses at the end. You can allow a few minutes for the guests to mingle at the end to discuss the mystery.

9:45 PM: Another bonus game is played (15 minutes)

10:00 PM: Now it would be time for an optional awards ceremony! (5-10 minutes)

***Please note: if you want to shorten the mystery party, omit the bonus games, don't stop for dinner and simply serve appetizers/snacks throughout, omit the accusation round &/or the awards ceremony. If you wish to extend the length of the party, simply add more bonus games!**

HOW TO PLAY A MURDER MYSTERY

GUEST INSTRUCTIONS

Professional actors are great for mysteries but do not worry because you do not have to be a good actor – or an actor at all – to play a murder mystery! The only quality that you need to possess is the ability to have a blast!

The mystery party is separated into 3 rounds. During the party, you will be handed an envelope that contains the clues necessary for your character for the round. The clues will provide everything that you will need to solve the mystery. However, during the investigation segment of the game, you will need to ask the right questions and pay close attention to other guests' clues to be able to get the whole picture of what has happened.

FULL INSTRUCTIONS IN THE PURCHASED GAME

From this point forward, you are to remain in character until the mystery is solved. If you are playing a 'green alien from Mars', then that is who you are until the end! Undoubtedly, your host has cast you into a character that you are comfortable playing. There are some characters that are designed to be played more reserved than other characters that should be played more boisterous. Feel free to play your role however you feel comfortable. Feel free to embellish your character's personality if you would like. However, if you are feeling more reserved tonight, you can opt to allow the other characters to approach you or you can simply listen in on others' conversations to get your information. Not everyone needs to or should have the spotlight!

OPTIONAL PRE-GAME TASKS:

CHARACTER B

OPTIONAL - for some pre-party fun, you can contact the following guests in the week leading up to the party:

Contact the guest playing Character Y and tell her that your appointment book is completely free next Tuesday if she would like to make an appointment! That is, if she is ready for a *real* hairstyle!

(**Contact info:** _____)

Contact the guest playing Character H and tell her that your little sister needs help with her math homework - so come over tonight or you won't braid her hair anymore.

(**Contact info:** _____)

Please note: either contacting the guests above or deciding to skip these tasks will not alter the mystery or anyone's ability to solve the mystery in anyway. However, contacting others will prepare everybody for an exciting mystery party!

← **EACH PLAYER WILL HAVE A PRE-GAME TASK CARD IN THE PURCHASED GAME CHARACTER'S NAMES HAVE BEEN REMOVED TO PREVENT SPOILERS**

ROUND ONE CLUES

CHARACTER I - ROUND ONE CLUES TO REVEAL DURING THIS ROUND

During this round, mingle with the other guests to discuss the following with whomever you choose:

- Talk to Ione Felo about different fragrances. You don't understand why she gets so angry when she walks through the store and you hand her a fragrance card. She should just enjoy the fragrance! She may actually buy a bottle one day!
- Tell Tarilyn Tonrow that her movies all are horrible. Her arrogance isn't justified by her film career.
- Ask Trianne Thingros how she plans to top what all she has done with reality TV. See if there are any new reality shows coming up that she's auditioning for.
- Speak to Mary about what she thinks of her mother-in-law-to-be. You think she mistreats Mary. She's trying to ruin everybody's time here at the shower!
- You heard Ione Felo wants Mary to stop being friends with some people here at the shower. That's rude!

PERSONAL INFORMATION (You can conceal these clues from the other guests)

- You're playing the role of a 'one-upper.' No matter what anyone says, you've done it more, bigger, and with more people watching! Yes, it is annoying, but funny. Have fun with this!
- Ione Felo really despises you, but you think it is funny.

← **EACH PLAYER WILL
HAVE A ROUND ONE
CARD IN THE
PURCHASED GAME
CHARACTER'S NAMES
HAVE BEEN REMOVED TO
PREVENT SPOILERS**

ROUND TWO CLUES

✂ Cut out and stuff these clues into sealed and labeled envelopes

CHARACTER O - ROUND TWO

PRE-MURDER:

- ✓ Talk to everyone about your favorite fragrances. Especially Character P.
- ✓ Ask Character W why she and Character B hate each other so much. What could be so bad?
- ✓ Ask Character L how her hairstyling business is doing. You'd love to sell fragrances in her salon.
- ✓ Speak to Character A about why she invited some of these people to the shower – not everyone seems to get along!

POST MURDER:

- ☠ A fingerprint on the murder weapon doesn't mean it was the murderer's print. If there are multiple fingerprints found on the weapon - the murderer didn't wipe the weapon after the murder.
- ☠ Character M was in the room during the murder, but more than a handful of people were gone from the room and should be considered prime suspects.
- ☠ You never left the living room where the party was held after your arrival to the shower.
- ☠ The murderer will lie, so rely upon facts.
- ☠ The murderer is the one with the most to gain from the victim's death. Or at least that is what you've gathered from reading crime drama novels.

← **EACH PLAYER WILL HAVE A ROUND TWO CARD IN THE PURCHASED GAME CHARACTER'S NAMES HAVE BEEN REMOVED TO PREVENT SPOILERS**

THE VICTIM SIGN.

**VICTIM SIGN IS IN THE
PURCHASED GAME**

SAMPLE

INGERPRINT ANALYSIS
REPORT IN THE
PURCHASED GAME

SAMPLE

MURDER MYSTERY INVESTIGATION SHEET

Investigator: _____

| SUSPECT | MOTIVE | EVIDENCE |
|---------|--------|----------|
| | | |

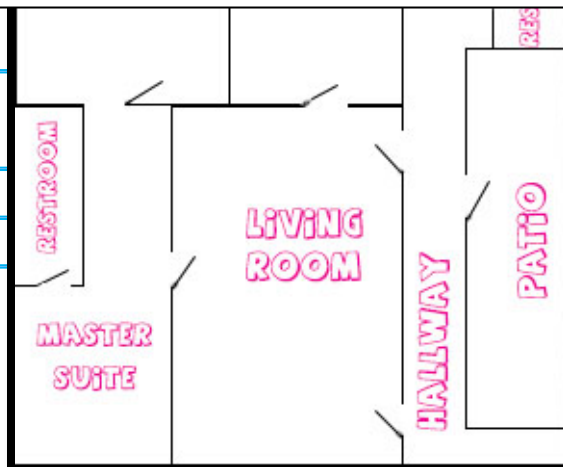
**EACH PLAYER WILL
HAVE A MYSTERY
INVESTIGATION
SHEET IN THE
PURCHASED GAME**

FINAL GUESS:

WHODUNIT _____

MOTIVE _____

Copyright © mymysteryparty.com



← HERE'S A
DIAGRAM
OF IMA'S
HOUSE YOU
MAY FIND
USEFUL.

ROUND THREE CLUES

CHARACTER X

SOLUTION ROUND THREE

READ WHEN YOU ARE TOLD IT IS YOUR TURN

SAY THE FOLLOWING TO THE GROUP:

Nope, I'm not the murderer. Why would I kill a potential customer? But anyway, I have some fabulous new fragrances for the season. Maybe you guys could all check them out sometime this week!

The following guests are to read their solutions in this order. If any of these characters are not guests, skip them and go to the next.

Character I Character S Character L

← EACH PLAYER WILL HAVE A ROUND THREE CARD IN THE PURCHASED GAME CHARACTER'S NAMES HAVE BEEN REMOVED TO PREVENT SPOILERS

NAMETAGS

IMA GUDFRIEND



MAID OF HONOR & PASTRY CHEF

← EACH PLAYER WILL HAVE A NAME TAG IN THE PURCHASED GAME

MENU SUGGESTIONS

LOVE & CUDDLIN' STUFFED MUSHROOMS

THE BRIDEZILLA SALAD

WEDDING DAY STUFFED CHICKEN

THE CASSEROLE OF HONOR

THE BEST MAN

THE BEAUTIFUL BRIDE CAKE

THE BRIDAL BOUQUET

BACHELORETTE PARTY IN A GLASS

THE MOTHER IN LAW

**RECIPES ARE IN THE
PURCHASED GAME**

BONUS ACTIVITIES!

FOR 100 MORE PARTY GAMES AND MORE PARTY ADVICE, RECIPES, THEMES, ETIQUETTE AND MORE, PURCHASE [THE OFFICIAL PARTY HOST HANDBOOK BY DR. BONNIE](#).



NOW AVAILABLE AT MY MYSTERY PARTY'S PROP EMPORIUM, BARNES & NOBLE AND AMAZON.COM AS WELL AS OTHER ONLINE BOOK RETAILERS.

FAMOUS COUPLES' TRIVIA

SO YOU THINK YOU CAN DANCE CONTEST

THE 'DRAWIN' YOUR CELEBRITY DREAM GUY' GAME!

THE 'FABULOUS WEDDING DRESS CHALLENGE' GAME!

BLINDFOLD WEDDING MAKEUP ARTIST CHALLENGE

WEDDING MOVIE CHALLENGE!

BONUS GAME
INSTRUCTIONS ARE IN THE
PURCHASED GAME



WARNING: IN ADDITION TO THE SOLUTION BEING GIVEN WITH THE ROUND THREE SOLUTION CARDS, AN ADDITIONAL ANSWER KEY AND BACKGROUND INFORMATION TO THE FINAL STORY OF THE MURDER MYSTERY IS ON THE NEXT PAGE. DO NOT READ IT OR LOOK AT IT IF YOU WANT TO KEEP IT A SURPRISE. AT THE VERY END OF THIS DOCUMENT IS A LIST TO READ THE FINAL SOLUTION ROUND. THIS IS NOT NECESSARY TO SEE; HOWEVER, SINCE THE ORDER IS GIVEN ON THE INDIVIDUAL CHARACTERS' ROUND THREE SOLUTION CARDS. START ROUND THREE WITH THE PLAYER THAT HAS 'READ FIRST' ON THEIR CARD AND ALL WILL PLAY OUT SMOOTHLY.



Do not read if you do not want to know the solution!

THE ANSWERS LIE WITHIN:

**ANSWER KEY IS IN THE
PURCHASED GAME**